

Mark Adlington
A MEMORY OF ELEPHANTS

Mark Adlington
A MEMORY OF ELEPHANTS

13–29 September 2018

John Martin Gallery

COVER:
Lobolo, 2017
charcoal and pastel on paper
33 x 23½ inches, 84 x 60 cms

“During three intense months in Africa over the last two years, I have had the fortune to meet and draw some of Kenya’s most iconic tuskers, spend time with Namibia’s desert adapted elephants, and had the luxury of whole days on my own with huge herds of females and young on the Laikipia plateau.

Perhaps no other creature reminds us so acutely of ourselves as the elephant. With a similar lifespan, social structure, enormous brain, and an ability to show grief, learning, play, cooperation, altruism, compassion, a sense of humour and yes, memory, the elephant is the ultimate ripost to those who would deny other animals a soul.

This exhibition is called “A Memory of Elephants” after their collective noun but unusually, most of the paintings are of individuals. Age, gender, size, beauty, character, eccentricity, boldness, or the lack of it, defined each elephant I was lucky enough to meet, to such an extent that I felt compelled to create a gallery of individuals, some famous or even infamous, but all of whom had made a distinct impression in very different ways.

Without the generosity and encouragement of two exceptional Kenyan families, this exhibition could never have happened. I have witnessed first hand, over several months, the challenges faced by conservation on a daily basis, which is why I wanted to support the Big Life Foundation in its award winning work. The human population of planet earth has doubled since I begged my grandparents to take me to Africa as a small boy, so even without ivory poaching, human/elephant coexistence faces growing and complex difficulties. I have painted a “Memory of Elephants”, a herd, for this exhibition but it is also my personal experience of elephants, of individual, monumental, living, behemoths - the largest land animals on earth. I pray that this poetic collective noun never becomes an epitaph for these magical giants of the Savannah.”.

Mark Adlington, 2018



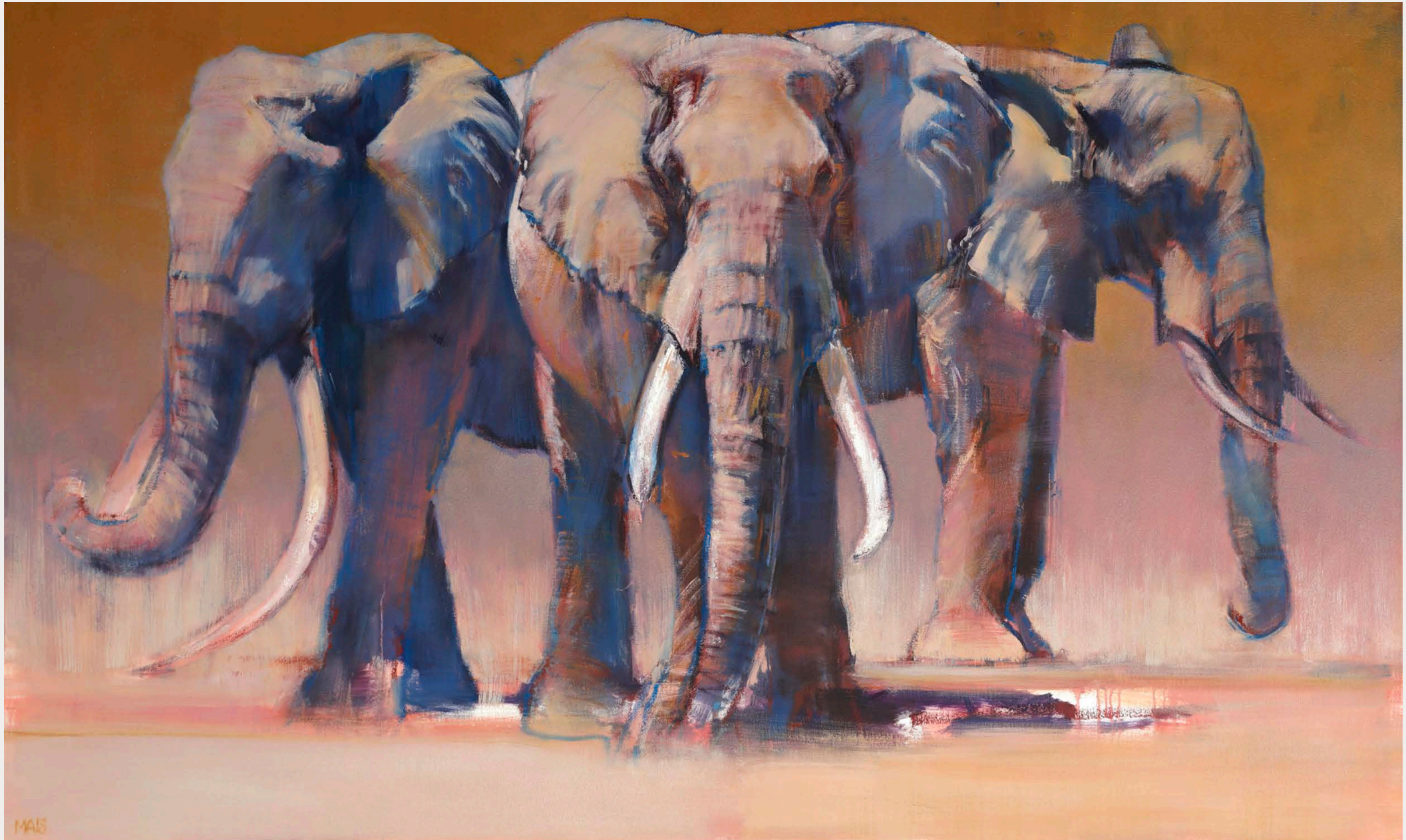


Bull Elephant, Loisaba Conservancy, 2018
oil on canvas
48 x 36 inches, 122 x 91 cms



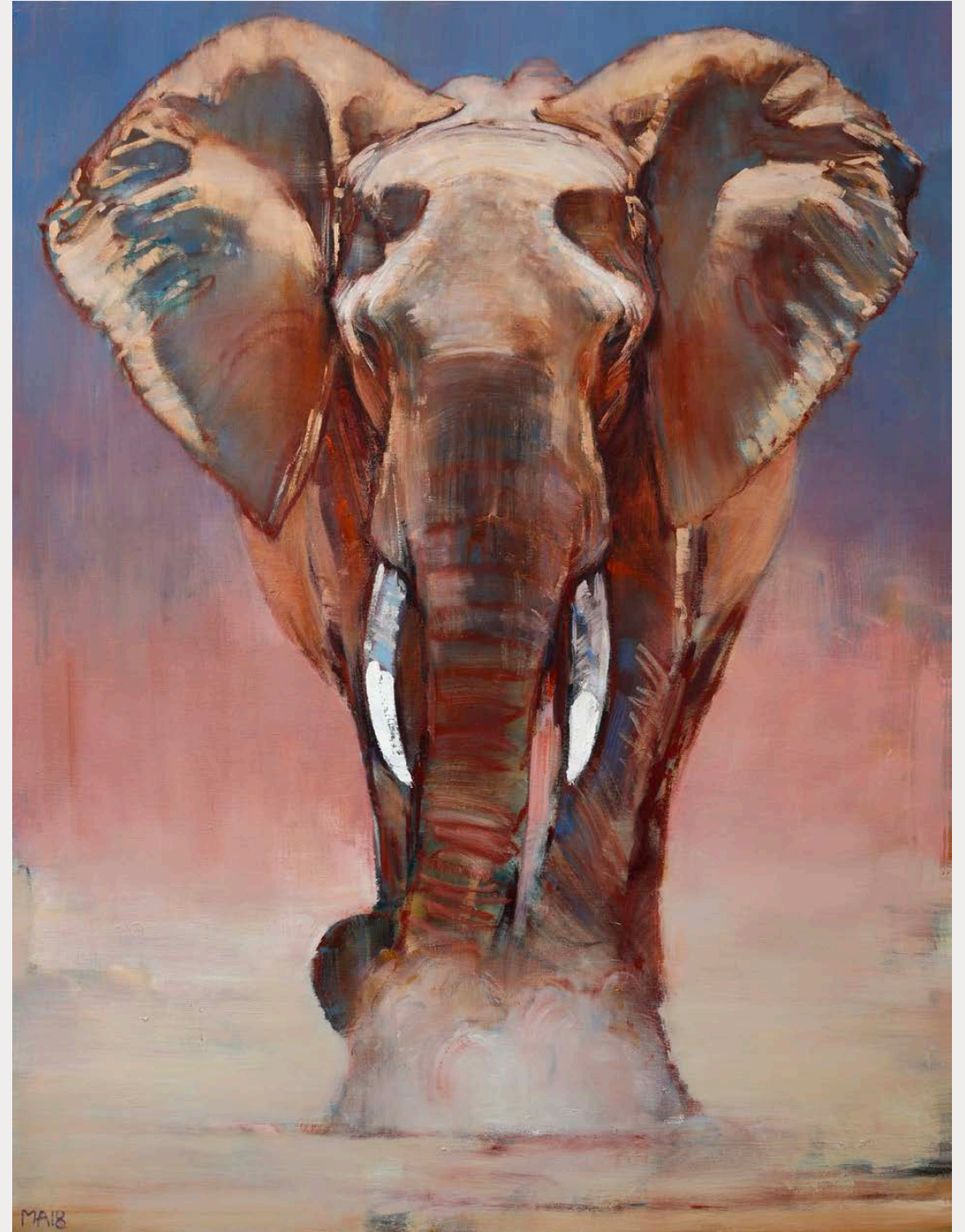
ABOVE:
Line, 2018
graphite on paper
8 x 8 inches, 20 x 20 cms
OPPOSITE:
Tofauti, Chyulus, 2018
oil on canvas
48 x 36 inches, 122 x 91 cms

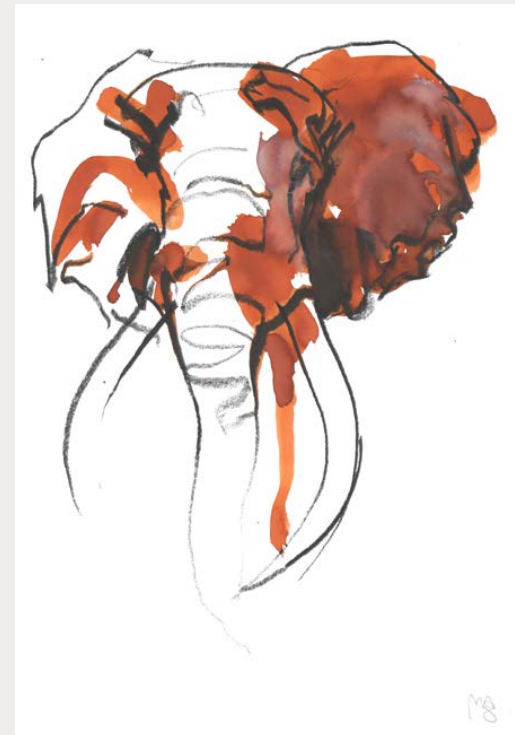
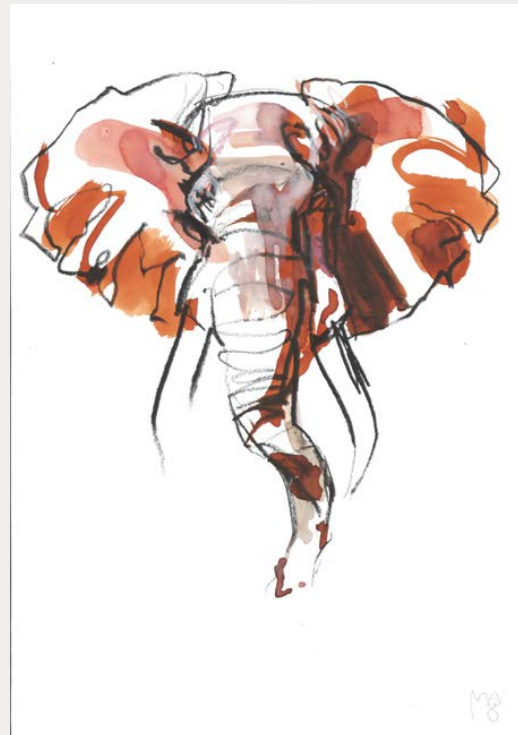
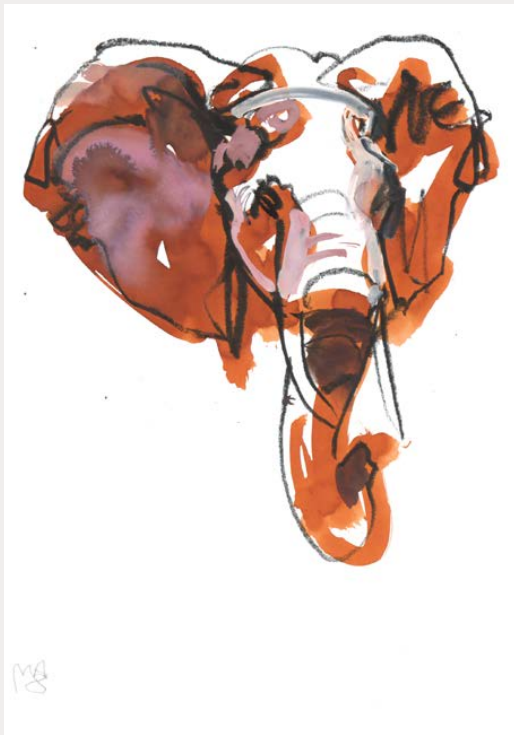
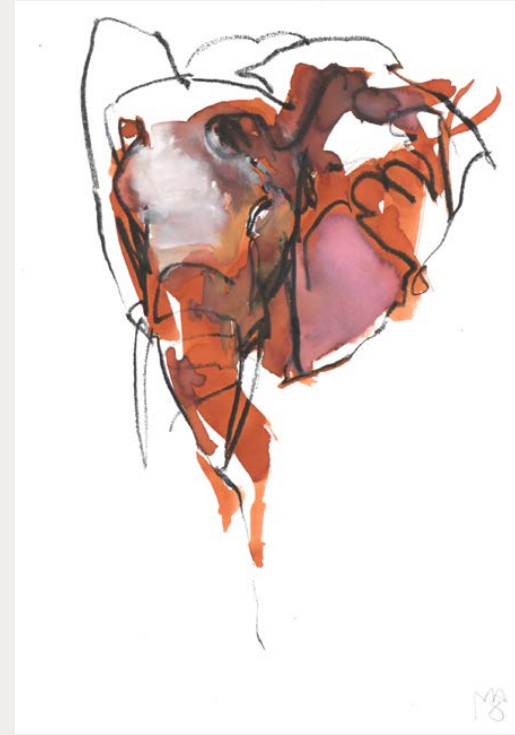
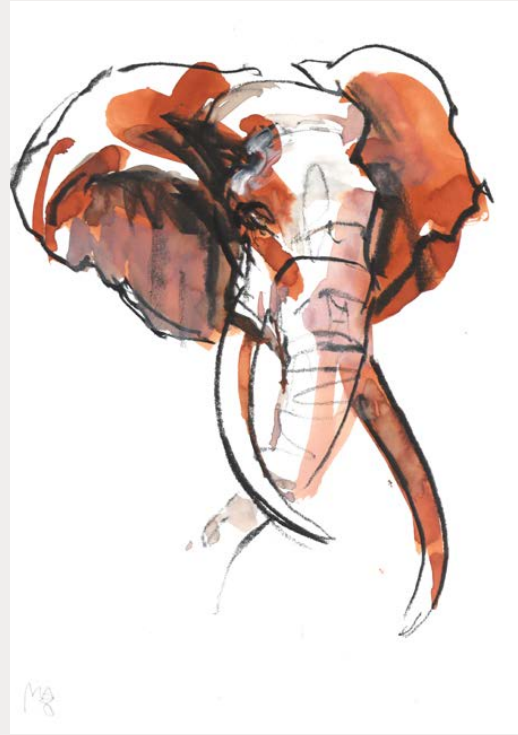
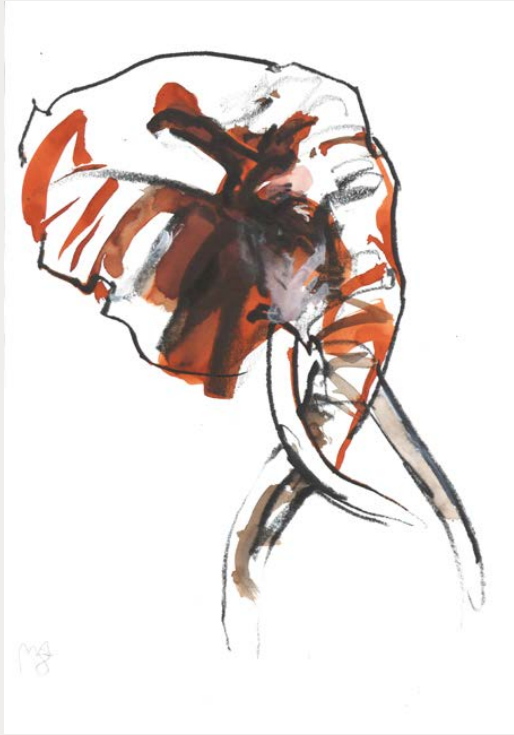




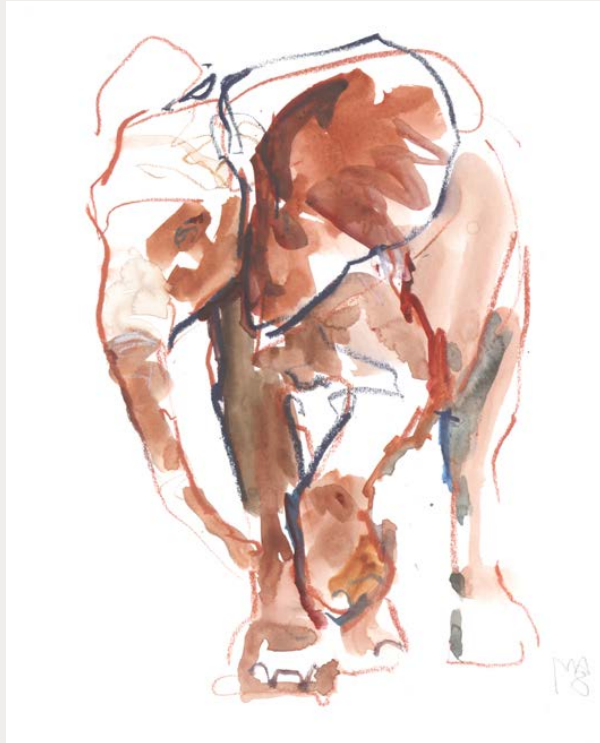
Three, 2018
oil on canvas
36 x 60 ins, 91 x 150 cms

Dust Bath, Loisaba, 2018
oil on canvas
48 x 36 inches, 122 x 91 cms





Head Studies 9,8,7,12,4,10(Clockwise), 2018
Mixed media on paper
16½ x 11¾ inches, 42 x 30 cms



ABOVE:
Mini Matriarch, Reteti, 2018
Gouache and watercolour
16½ x 11¾ inches, 42 x 30 cms

OPPOSITE:
Elephant, Loisaba Conservancy, 2018
oil on canvas
48 x 36 inches, 122 x 91 cms



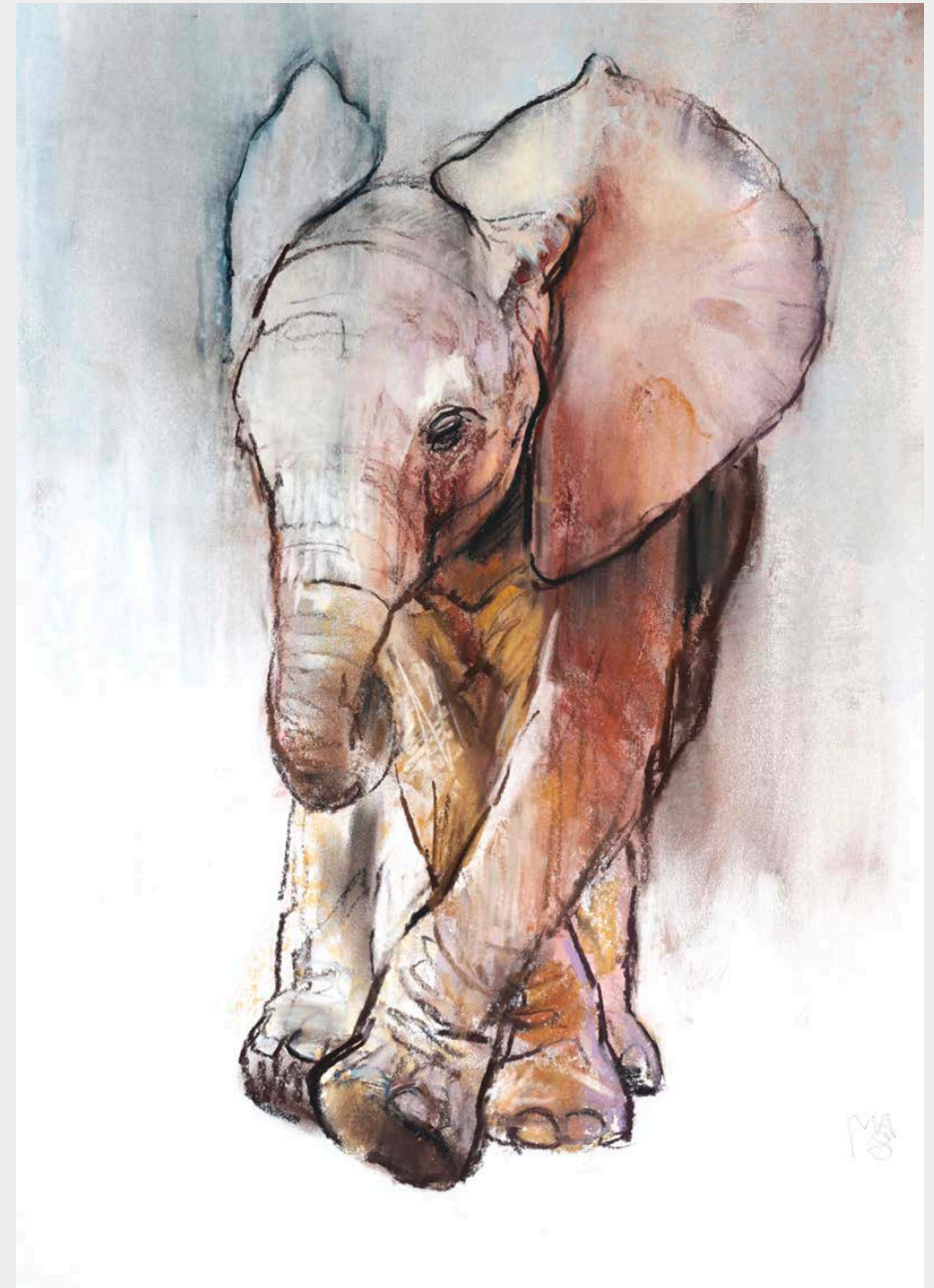


Mother And Calf Loisaba, 2018
oil on canvas
48 x 36 inches, 122 x 91 cms



ABOVE:
Baby Elephant, Loisaba, 2018
charcoal and pastel on paper
23½ x 16½ inches, 60 x 42 cms

OPPOSITE:
Baby Elephant II, Loisaba, 2018
charcoal and pastel on paper
23½ x 16½ inches, 60 x 42 cms





ABOVE:
Baby Elephant, Ol Pejeta, 2018
mixed media on paper
11¾ x 16½ inches, 30 x 42 cms
OPPOSITE:
Mother, 2018
oil on canvas
48 x 36 inches, 122 x 91 cms

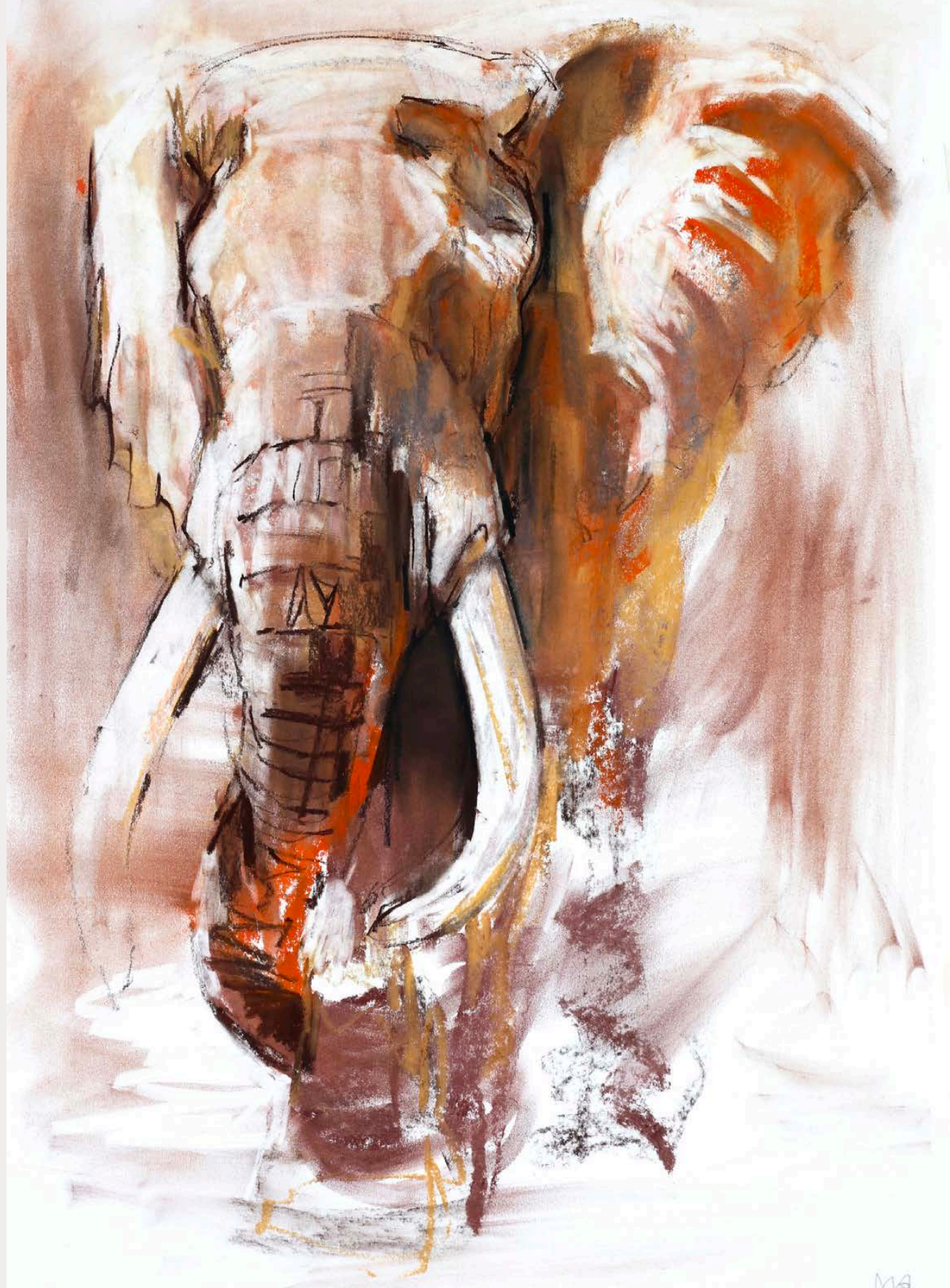


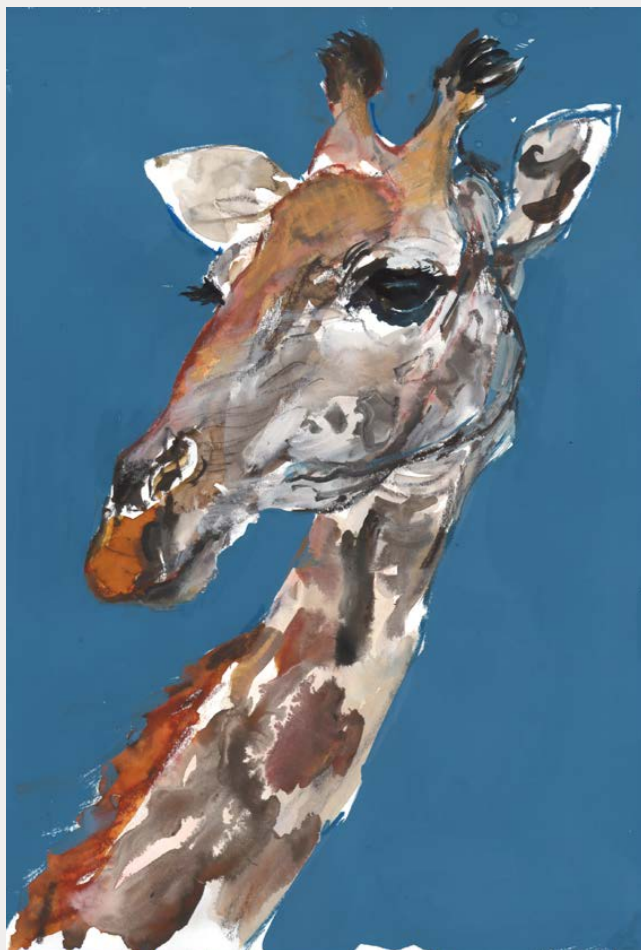
Hot Day, Ol Pejeta, 2018
oil on canvas
36 x 48 inches, 91 x 122 cms



ABOVE:
White Rhino, Ol Pejeta, 2018
mixed media on paper
23½ x 16½ inches, 60 x 42 cms
OPPOSITE:
Young White Rhino, Ol Pejeta, 2018
mixed media on paper
11¾ x 16½ inches, 30 x 42 cms

Tofauti (Study), 2018
charcoal & pastel on paper
33 x 23½ inches, 84 x 60 cms





LEFT:
Blue Bull (Masai Giraffe Head), 2018
mixed media on paper
11¼ x 8 inches, 30 x 21 cms

CENTRE:
Masai Giraffe Cow, 2018
mixed media on paper
16½ x 11¼ inches, 42 x 30 cms

RIGHT:
Masai Giraffe, 2018
mixed media on paper
11¼ x 8 inches, 30 x 21 cms



One Ton Dusting, 2018
oil on canvas
48 x 36 inches, 122 x 91 cms



One Ton Drinking, 2018
oil on canvas
48 x 36 inches, 122 x 91 cms



The Boys, 2018
oil on canvas
48 x 72 inches, 122 x 183 cms

A NOTE ON SALES

Works on canvas will be available on receipt of this catalogue. The works on paper will be available for sale at the private view and during the exhibition. Further images and a price list are available on request.

For more information please contact
John Martin or Tara Whelan
tara@jmlondon.com +44 (0) 20 7499 1314
Photography: Jeremy Goss

John Martin Gallery

38 Albemarle Street | info@jmlondon.com | Tel +44 (0)20 7499 1314
London, W1S 4JG | www.jmlondon.com | Mon-Fri 10-6; Sat 10-1:30