

Quarterly Report 2026

January | February | March

BIG LIFE
FOUNDATION



As we entered 2026, we said goodbye to one of Amboseli's most iconic elephants: Craig, a legendary tusker, who died peacefully of natural causes after an extraordinary life. While his loss was deeply felt, Craig's story is also a reminder of what successful conservation can look like. He lived a long, wild life because landscapes like Amboseli still exist - and because communities, rangers, partners, and supporters are working together to protect them.

The first quarter of the year brought both encouraging progress and new challenges across the ecosystem. Early and plentiful rains transformed the landscape, replenishing water sources and improving conditions for wildlife and livestock alike. At the same time, heavy rains created operational difficulties in the field, from impassable roads to shifting patterns of human-wildlife conflict that required rapid adaptation from our teams.

This quarter also marked an important milestone for Big Life: for the first time in our history, we surpassed 600 employees. Behind that number are hundreds of dedicated people - primarily recruited from local communities - working every day to protect wildlife and wild lands across the Greater Amboseli Ecosystem.

We also continued making strong progress securing critical habitat through conservation lease agreements with local landowners, helping keep key wildlife corridors open while supporting the communities who steward these lands.

The work reflected in this report is only possible because of the commitment of our rangers, field teams, community partners, and supporters around the world. Thank you for being part of this shared effort to protect East Africa's wildlife and wild lands for generations to come.

With gratitude,

Craig Millar

Chief Operating Officer, Big Life Kenya

WHERE WE WORK

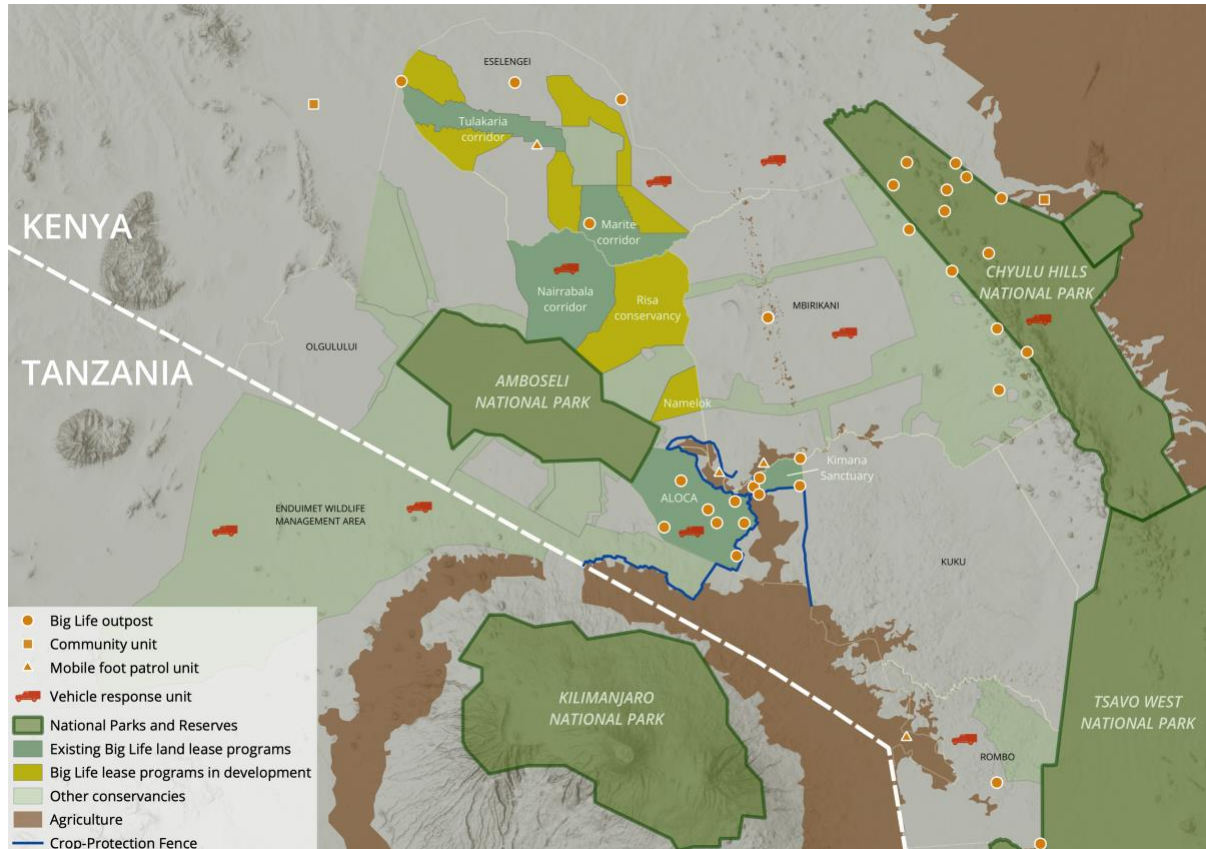
Big Life Foundation's area of operation (AOO) covers approximately 2 million acres across the Greater Amboseli Ecosystem in East Africa. Our team helps to protect and secure wildlife and critical habitat stretching from the rangelands north of Amboseli to the Chyulu Hills and Tsavo West National Parks in the east, and south to Kilimanjaro National Park. The area is a central connection point for migrating wildlife and contains some of the most iconic species and important habitat left in Africa.

Our AOO is divided into a core area with a permanent ranger presence and regularly patrolled by mobile units, a non-core area where mobile units respond based on need and are actively covered by our intelligence network, and adjacent areas where we provide support as needed. The level of Big Life support provided varies between outposts.

Core AOO: Eselengei, Kimana, Mbirikani, Nairrabala Conservancy, Oltemuai, Risa, Rombo, Chyulu Hills National Park, and Enduimet Wildlife Management Area (Tanzania)

Non-Core AOO: Amboseli National Park, Mailua Ranch, Merrueshi Ranch, Nasaru-Olosho Conservancy, Olgulului, Osilalei Ranch, Taveta Area

Adjacent: Kuku, Tsavo West National Park



WILDLIFE

Wildlife Protection

The Greater Amboseli Ecosystem is generally regarded as one of the richest wildlife regions left in Africa. But the same animals that make it famous also put it in the crosshairs for illegal wildlife crime.

Big Life strives to prevent the poaching of all wildlife in our area of operation. Our community rangers are expertly trained, well-equipped, and ready for action at a moment's notice. They're supported by a fleet of vehicles, two airplanes, two tracker dogs, and an expansive intelligence network.

Besides tracking and apprehending poachers, Big Life also supports local prosecutors to ensure the guilty are punished to the fullest extent of the law.

Since our inception, poaching of all animals has dramatically declined and many wildlife populations are rebounding.

2026 Q1 OVERVIEW

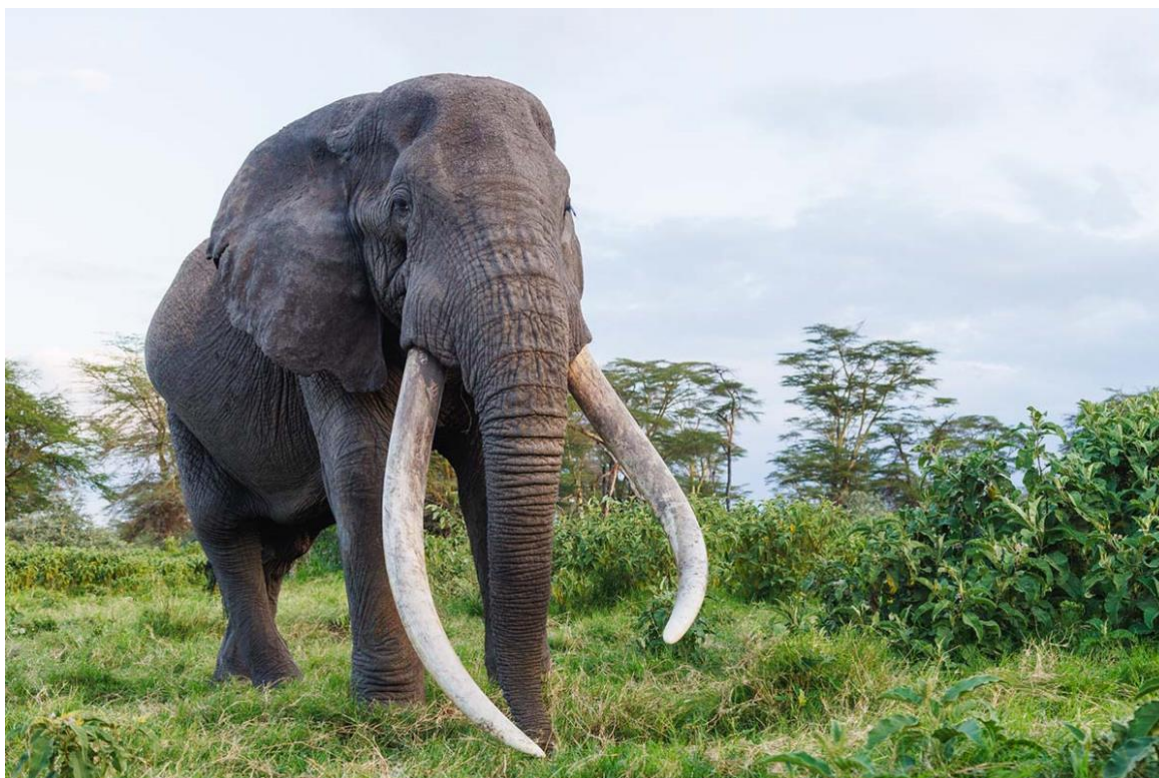
Total Staff: 606	Rangers: 394
Ranger Units: 47	Tracker Dogs: 2
Mobile Ranger Units: 13	Permanent Outposts: 33
Aerial Surveillance Hours: 35.72	Rangers Trained: 27
Total Suspects Arrested: 50 YTD Total: 50	Total Arrest Incidents: 31 YTD Total: 31
Kilometers Patrolled This Quarter: On foot: 64,869 By vehicle: 131,042 Q1 TOTAL: 195,911 YTD TOTAL: 195,911	Total Kilometers Patrolled Since Inception (2011): On foot: 1,882,724 By vehicle: 5,501,498 TOTAL: 7,384,222



WILDLIFE

WILDLIFE CRIME & ANTI-TRAFFICKING

<p>SUSPECTS ARRESTED Poaching - Bushmeat: 5 Poaching Intention: 2 Trophy Possession: 17</p>	<p>RECOVERED ITEMS Ivory: 84.8+ kg Snares: 98 Other: bushmeat (275.8+ kg), sandalwood (933.7 kg), ostrich eggs (3), python skins (5), owl eggs (2), tools/weapons (155)</p>
<p>INCIDENTS Poaching - Bushmeat: 3 Poaching intention: 1 Trophy Possession: 9</p>	<p>PROSECUTIONS Cases - Concluded: 6 Cases - Ongoing: 1,423 suspects</p>
<p>MORTALITIES - ELEPHANT Human-Elephant Conflict: 1 Poaching: 0 Natural Causes: 2 Unknown: 4 Human-related: 0</p>	<p>MORTALITIES - OTHER <i>(excluding large predators)</i> Dik-dik (5), Gazelle (1), Gerenuk (1), Giraffe (12), Guinea fowl (1), Hippo (1), Impala (1), Lesser kudu (1), Ostrich (1), Porcupine (1), Snake (2), Spur fowl (1), Wildebeest (3), Zebra (19), Zorilla (1)</p>
<p>INJURIES - ELEPHANT Elephants Injured: 7 Elephants Treated: 1</p>	<p>RESCUES/TREATMENTS - OTHER ANIMALS Gazelle (1), Giraffe (6), Python (1), Zebra (8)</p>



WILDLIFE

RHINO PROTECTION

There are **six** known Eastern black rhinos in Big Life’s area of operation. We previously reported nine, but three individuals have not been documented on camera in more than two years. While it’s possible they are still present or moved to neighboring areas, for scientific accuracy, we’re adjusting our population estimate. These rhinos are critically endangered and spend their time in the densely-forested Chyulu Hills National Park, protected by dedicated Big Life rangers and the Kenya Wildlife Service. Big Life also improves and maintains infrastructure in the rhino area, such as roads and watering holes, which will support the future inbound translocation of rhinos.

Rhino Mortalities: 0 Rhino Births: 0	Rhino Snares Found: 0
Rhino Protection Rangers: 63	Dedicated Rhino Outposts: 10 Dedicated Rhino Units: 10
RHINO MONITORING Direct Sightings: 1 Indirect Sightings (<i>via camera trap</i>): 19 Spoor Sightings: 27	INFRASTRUCTURE Fencing: 70+ km constructed by SWT to date Water Points: 3 Camera traps: 42

NOTABLE WILDLIFE UPDATES (click to read):

- [RIP Craig, Amboseli’s Largest Tusker](#)
- [Rhino Horn Dealer Arrested](#)
- [Two Elephant Treatments in Kimana Sanctuary](#)
- [Tracker Dog Unit Update](#)



WILDLIFE

Human-Wildlife Conflict

Human-Wildlife Conflict (HWC) takes three primary forms across Big Life’s area of operation: crops raided by wildlife, particularly elephants; livestock killed by predators, such as lions; and humans injured or killed due to living in close proximity with wildlife.

HUMAN-ELEPHANT CONFLICT (HEC) MITIGATION

Poaching continues to pose a significant threat, but many elephants face an even bigger challenge: conflict with humans. As the human population increases, so do competing land uses, such as farming and cattle grazing. As humans compete for limited resources like water, land, and grass for livestock, we further encroach onto what were once wild lands. With less space to share, people and animals now come into direct contact at an alarming rate, often with deadly results.

Elephant Crop-Raiding Incidents: 22	Acres Damaged by Elephant: 9.6
Crop Raids Prevented by Big Life: 20	Elephant Retaliatory Hunts Attempted: 0 Retaliatory Hunts Stopped: 0
Crop-Protection Fence Constructed to Date: 100 km Crop-Protection Fence Maintenance Workers: 32	Additional HEC incidents*: 24 <i>*including water tanks/pipes damaged by elephants, boma destruction, etc.</i> Livestock Killed by Elephants: 2

PREDATOR PROTECTION

Big Life protects vulnerable predators in the ecosystem in collaboration with partners and local communities. The core component of Big Life’s predator protection program in Kenya is livestock compensation, which reduces the motivation for retaliatory killing in response to livestock depredation.

The Predator Compensation Fund (PCF) pays Maasai livestock owners a portion of the value of their livestock lost to predators, on the condition that no predators are killed in retaliation. Big Life manages PCF on Mbirikani, Eselengei, and the ALOCA conservancies. Given the success of this program, the goal is to continue expanding PCF across the entire ecosystem.

The second part of Big Life’s predator protection program in Kenya is the Maasai Olympics, which was established in 2012 as an alternative for the traditional killing of lions. At the Maasai Olympics, young warriors can compete for recognition, prove bravery, and attract girlfriends through a sports competition based on traditional warrior skills. The 7th edition of the games will commence in June 2026, with the finals taking place December 12, 2026.

WILDLIFE

Lion Mortalities: 5 (3 HWC, 1 snaring, 1 unknown) Violations of PCF: 0 Lion Retaliatory Hunts: 3 Retaliatory Hunts Prevented/Stopped: 3	Additional Predator Mortalities (human-related or unknown): Hyena: 1 (2 HWC) Cheetah: 1 (Persecution killing)										
Compensation Issued for: <table style="margin-left: 20px;"> <tr> <td>96 Cows:</td> <td style="text-align: right;">\$17,662</td> </tr> <tr> <td>238 Sheep/Goats:</td> <td style="text-align: right;">\$8,572</td> </tr> <tr> <td>2 Donkeys:</td> <td style="text-align: right;">\$54</td> </tr> <tr> <td>Q1 TOTAL:</td> <td style="text-align: right;">\$26,288</td> </tr> <tr> <td>YTD TOTAL:</td> <td style="text-align: right;">\$26,288</td> </tr> </table>	96 Cows:	\$17,662	238 Sheep/Goats:	\$8,572	2 Donkeys:	\$54	Q1 TOTAL:	\$26,288	YTD TOTAL:	\$26,288	Livestock Killed by Predators: Caracal: 5 Cheetah: 34 Hyena: 163 Jackal: 58 Lion: 74
96 Cows:	\$17,662										
238 Sheep/Goats:	\$8,572										
2 Donkeys:	\$54										
Q1 TOTAL:	\$26,288										
YTD TOTAL:	\$26,288										

ADDITIONAL HUMAN-WILDLIFE CONFLICT

Humans Injured: 9	Wildlife Responsible for Injuries: caracal (2), elephant (3), hyena (1), leopard (2), lion (1)
Humans Killed: 0	Wildlife Responsible for Death: N/A



Securing Wildlife Habitat

Protecting habitat is at the heart of ensuring wildlife can survive and thrive across Greater Amboseli. As pressures from land subdivision, fencing, and unsustainable development increase, safeguarding open rangelands and critical wildlife corridors has become an urgent priority. Without connected, accessible habitat, wildlife cannot move freely to find food, water, and breeding grounds—making long-term conservation impossible. Recognizing this, Big Life works closely with local communities to secure and manage the land that both wildlife and people depend on.

This work takes two primary forms. First, Big Life provides annual lease payments to hundreds of landowners in key areas like the Kimana Corridor, creating a direct financial incentive to keep land open and free from incompatible development. Second, we support the establishment and strengthening of community conservancies in strategically important areas. These conservancies protect vital wildlife movement corridors and dispersal zones while also sustaining traditional pastoralist livelihoods by maintaining access to grazing land.

By aligning conservation with community needs, these efforts create a balanced, long-term solution. Landowners benefit from reliable income, livestock retain access to grazing resources, and wildlife can continue to move across a connected landscape. Through collaborative land-use planning, conservation agreements, and the development of sustainable income opportunities such as tourism, Big Life is helping to ensure that Amboseli remains a living ecosystem—one where wildlife and local communities can coexist and thrive together.



HABITAT

<p>ALOCA: Landowners benefitting from lease fees: 258 Number of acres protected: 15,480 Other: Lease renewal signings begun, Potential tourism investors meeting on regulations and applications held, Special AGM held on conservancy tourism plan</p>	<p>Kimana Sanctuary: Landowners benefitting from lease fees: 844 Number of acres protected: 5,700 Paying visitor days: 536</p>
<p>Eselengei: Landowners signed lease agreement: 700 <i>(Marite (399) and Tulakaria (301))</i> Number of acres under lease: 32,900</p> <p>Marite & Tulakaria expansion Landowners signed lease agreement: 151 Number of acres under lease: 7,097</p>	<p>Olgulului: Landowners signed lease agreement: 2,723 <i>(Nairrabala (1,738), Risa (938), Oltemuai (47))</i> Number of acres under lease: 57,183 <i>(Nairrabala (36,498) and Risa (19,698), Oltemuai (987))</i></p>
<p>Mbirikani: Other: MGR Cooperative elections of officials held</p>	<p>Rombo: Other: Strategic Environmental Assessment still awaiting NEMA approval</p>



HABITAT

Amboseli's arid rangelands are also under increasing strain. Rising livestock numbers, combined with the erosion of traditional rotational grazing practices, have placed unsustainable pressure on native grasses and led to widespread degradation of natural resources. As a result, critical habitats are deteriorating, threatening both wildlife and the communities who depend on these landscapes. In response, Big Life is working alongside local communities to address these challenges and restore balance to the ecosystem.

LAND

Rangers actively protect the land by fighting against illegal habitat destruction activities such as logging or charcoal production, sand and water extraction, and combatting bushfires. Rangers also enforce protected area rules in conservancies and national parks, where encroachment activities like trespassing, settlement, and grazing are illegal and harmful to critical ecosystem habitats.

In addition, since 2017, we've partnered with local communities, partner NGOs, and local government to implement a [carbon credit program](#) in the Chyulu Hills to protect it from deforestation and overgrazing. The program generates significant income for the management of the Chyulu Hills National Park and creates benefits for surrounding communities.

Suspects Arrested* for Habitat Destruction: 26 Habitat Destruction Arrest Incidents: 12 <i>*Sometimes released depending on severity of crime</i>	Non-Arrest Habitat Destruction Incidents: 3
	Incidents of Community Grazing, Conservancy, and Subdivision Land Use Rules Enforcement: 24



HABITAT

RESTORATION

Overgrazing in an arid environment has resulted in large areas without a protective covering; soils are eroding, and gullies scar the landscape. The little rain that does fall runs straight off the hard surfaces, depriving the land of moisture and resulting in a downward spiral. Large areas have been rendered unproductive, with negative impacts for both wildlife and people.

Thanks to support from Conservation International and Apple Inc., Big Life is working with the Mbirikani community to restore rangeland back to health. Thanks to funding from WWF and Twende, and implemented in partnership with JustDigg It, communities have added new restoration sites on both Mbirikani and in ALOCA.

Rangeland Restoration Area: 16,147 acres Active restoration: 3,675 acres Natural regeneration: 12,472 acres	Bunds installed Q1: 0 YTD: 0 Total: 190,529
Total acres reseeded: 3,402 to date	Number of people employed: 19

NOTABLE HABITAT UPDATES (click to read):

- [Kiliavo Loses 5th Court Case](#)
- [Big Life rangers have confiscated 26.5 Tons of Sandalwood since 2017](#)



COMMUNITY

Winning the hearts and minds of the community and providing a mutual benefit through conservation is the only way to protect wildlife and wild lands far into the future. To that end, Big Life provides a number of services in support of the community generally, including education, healthcare and income-generating initiatives, as well as lesser-known activities, such as using ranger vehicles as ambulances, arresting criminals for community crimes (like theft), conducting search and rescue operations, and more.

Community Crime Incidents: 1	Suspects Arrested: 1
Human Search and Rescue Incidents: 8	Livestock Search Incidents: 2
Other Community Support Incidents: 16 – <i>transport (3)</i>	Beehives: 67 in 6 apiaries

Big Life invests in the future of participating communities by funding teachers' salaries, providing scholarship funds for local students, and implementing conservation-specific curriculum in classrooms and communities.

Long-Term Student Scholarships Awarded: 403 Boys: 133 Girls: 270	Students Reached by Conservation Lessons: 936
One-Time Student Scholarships Awarded: 109	Students Reached by Club Activities: 450
Amount paid in Scholarships: \$101,580	School Visits: 67
Tertiary-Level Graduates: 0	National Park Trips: 3
	Teachers' Salaries Paid: 8

Healthcare is a key part of Big Life's community support program and by working in close coordination with the Kajiado South Department of Health, Big Life facilitates outreaches that provide primary healthcare, family planning services, immunizations, and antenatal check-ups across the Greater Amboseli ecosystem.

Big Life is also working to improve sexual and reproductive health and rights education. This not only improves individual health outcomes but also helps to build more resilient and empowered communities.

COMMUNITY

Back-Pack Medical Outreaches: 126	CHV Household Visits: 14,857
Family Planning Dialogue Days: 126	People De-wormed: 6,447
Sexual & Reproductive Health & Rights school talks: 55	Immunizations Administered: 13,867
Child Rights Club Meetings: 330	Family Planning Services Provided: 4,188
	People Reached with Family Planning Information: 41,568
	People receiving primary healthcare: 19,459

NOTABLE COMMUNITY UPDATES (click to read):

- [A Celebration of Maasai Culture](#)
- [Two Women, One Extraordinary Team](#)



**Thank you to our wonderful partners and supporters for helping make our work possible.
Together we can save wildlife and wild lands - now and for future generations.**